

denise e beppe berna

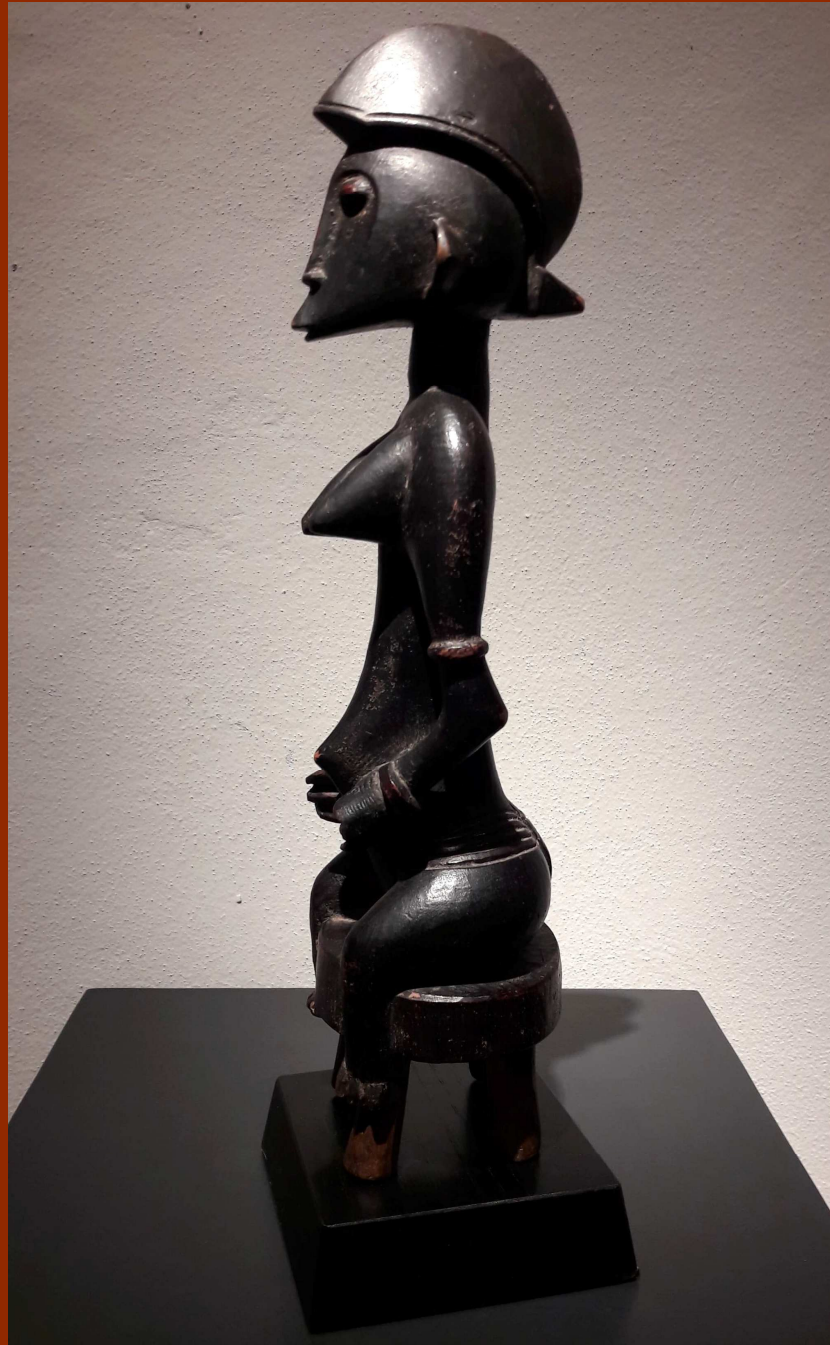
the preference

the preference



© denise and beppe berna
2019, bologna, italy

all ... by
beppe berna





Fiera Bergamo
Via Lunga, Bergamo

Stand n. 9
Padiglione A

January 12 – 20, 2019

works

Fang, Mabea

124Y

Ancient bust of a female ancestor **eyema-byeri**.

Second half of the 19th century, around 1890.

H. cm. 26,8

*Museum Umlauff, Hamburg
(1869-1943).*

German collection around 1910.

*Galerie Alex Vömel di Düsseldorf,
1965.*

*Ernst and Ruth Anspach collection
since 1967 (Congo ?).*

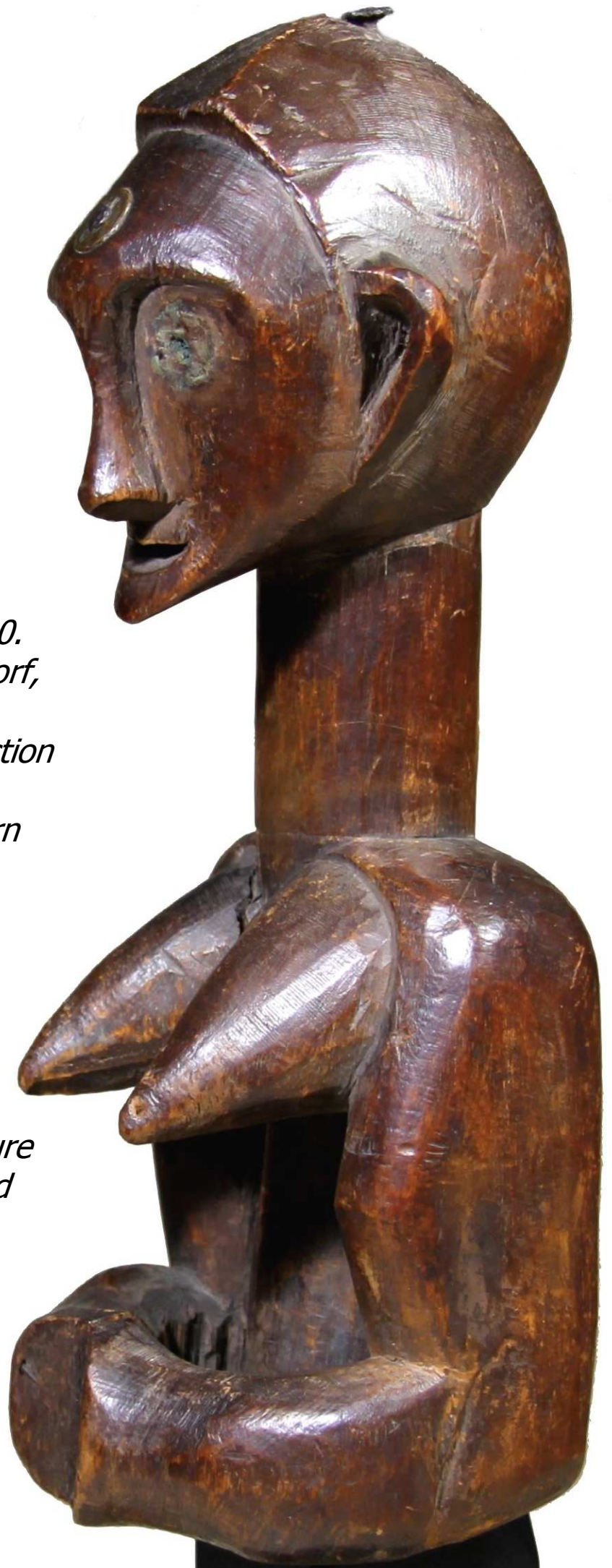
*Allan Stone collection (Northern
Luba).*

*Galerie Patrik Fröhlich, Zurich,
since 2014.*

Exhibitions:

*Museum of Primitive Art, New
York, in "African Tribal Sculpture
from the collection of Ruth and
Ernst Anspach", 1968.*

Page 22 of the catalog.









Yaure

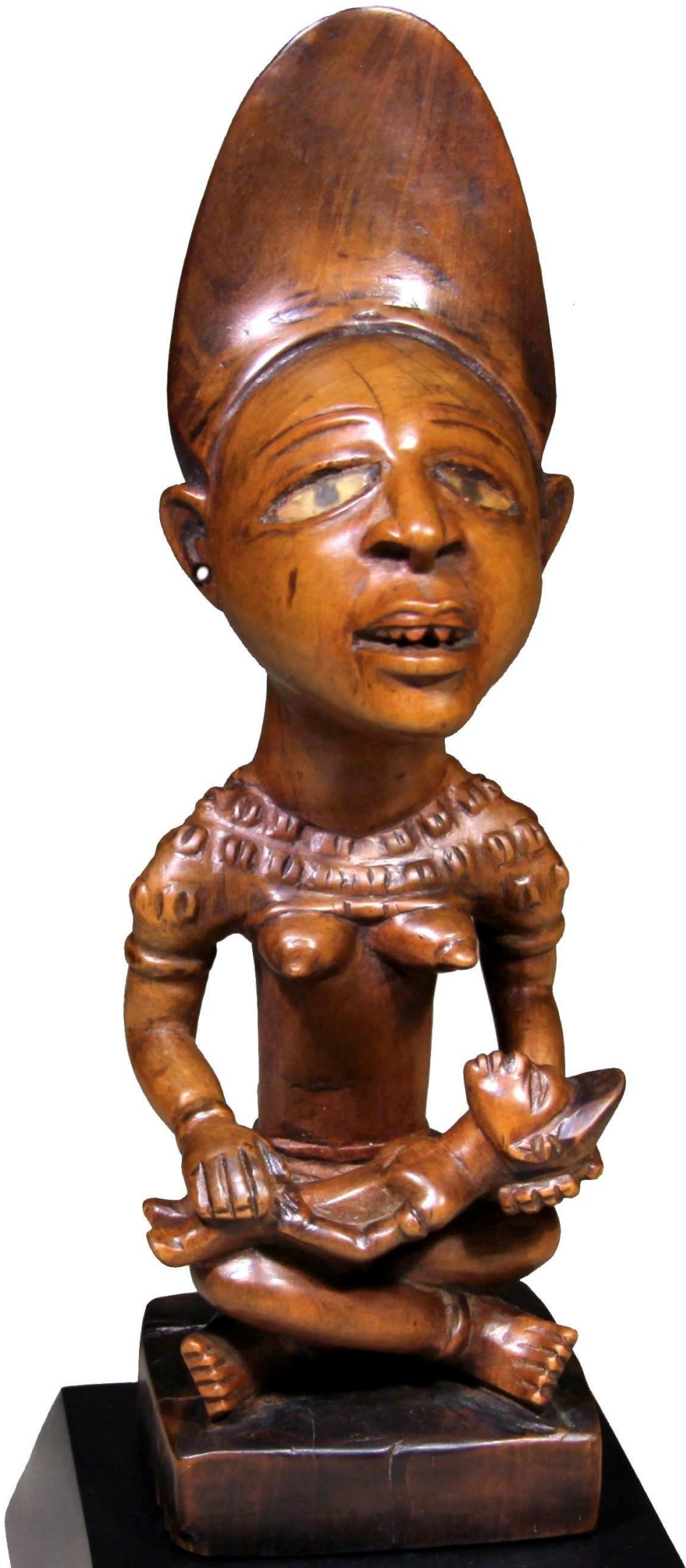
133Y

Je, very old mask with totemic bird.

H. cm. 42

*Old French collection.
German private collection.
Olivier Castellano, Paris.*





Kongo, Yombe

108Y

Phemba, exceptional maternity figure with the dead child.

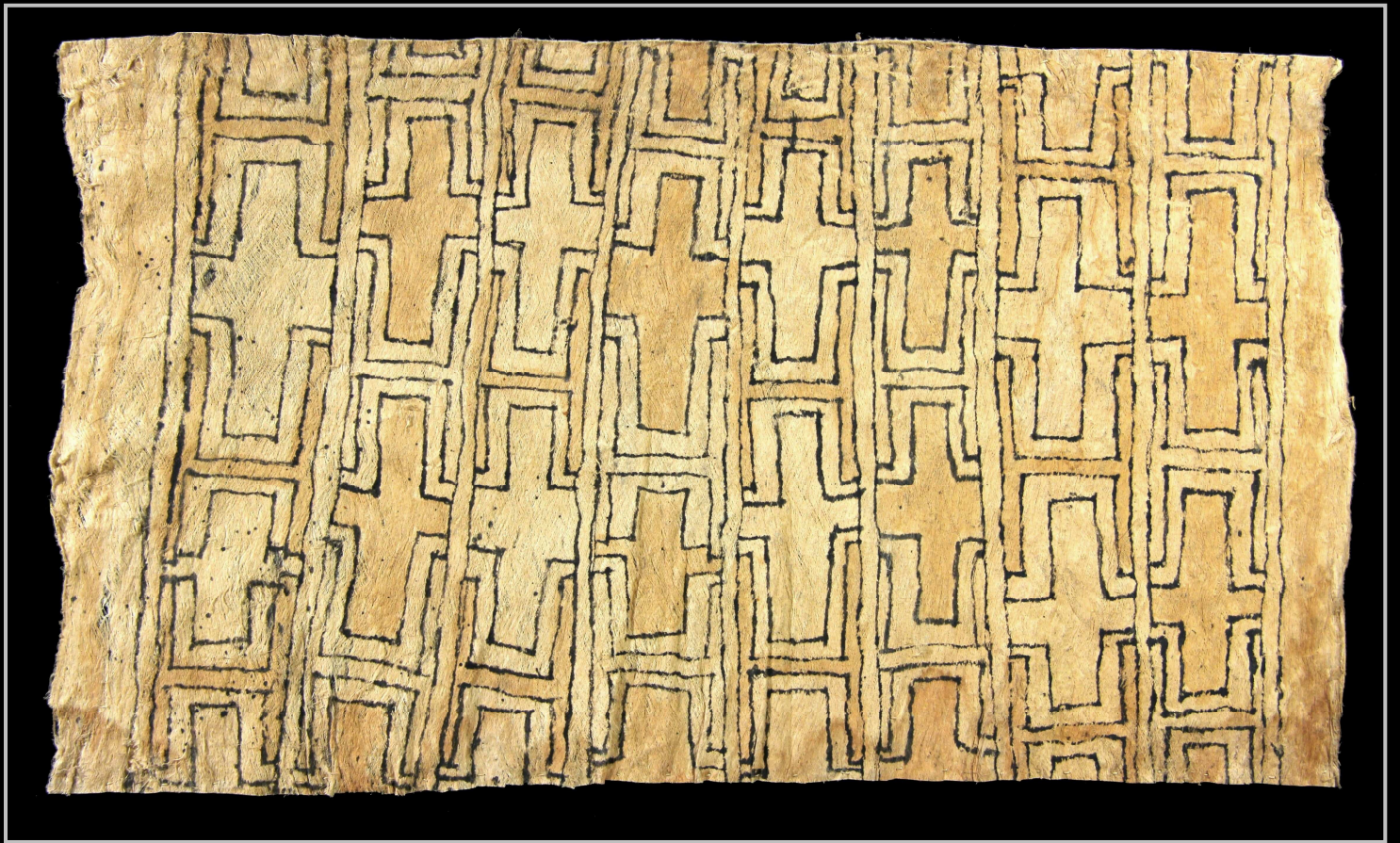
Late 19th / early 20th century.

H. cm. 25,5

Collected by a Belgian colonial couple between the 1940's and early 1950's. Pierre Dartevelle Collection, Brussels.







Dorey Bay, Cenderawash Bay (Geelvink)

161N/A

Fragment of ritual tapa.

Cm. 56 x 32

*Old Dutch collection, collected in 1946.
Els Verheij collection, Amsterdam.*

Exhibited:
TEFAF Maastricht, 2002





Baule

106V

Very important **Gbekre** monkey.

H. cm. 58

Charles Ratton (1895-1986), Paris.

Mamadou Keita, Amsterdam.

Dirck Uythof, Delft.

Prof. Rudolf Leopold (1925 –2010),

Leopold Museum in Vienna.

Pierre Dartevelle, Brussels.







Bamana

123Y

Ciwara, Bougouni style.

H. cm. 42

*Old French collection.
Olivier Castellano, Paris.*



Tiv

119Y

Inhambe female figure.
Probably the oldest known.

Second half of 18th / early 19th
century.

Radiocarbon C14.

H. cm. 75,5

Old French collection.

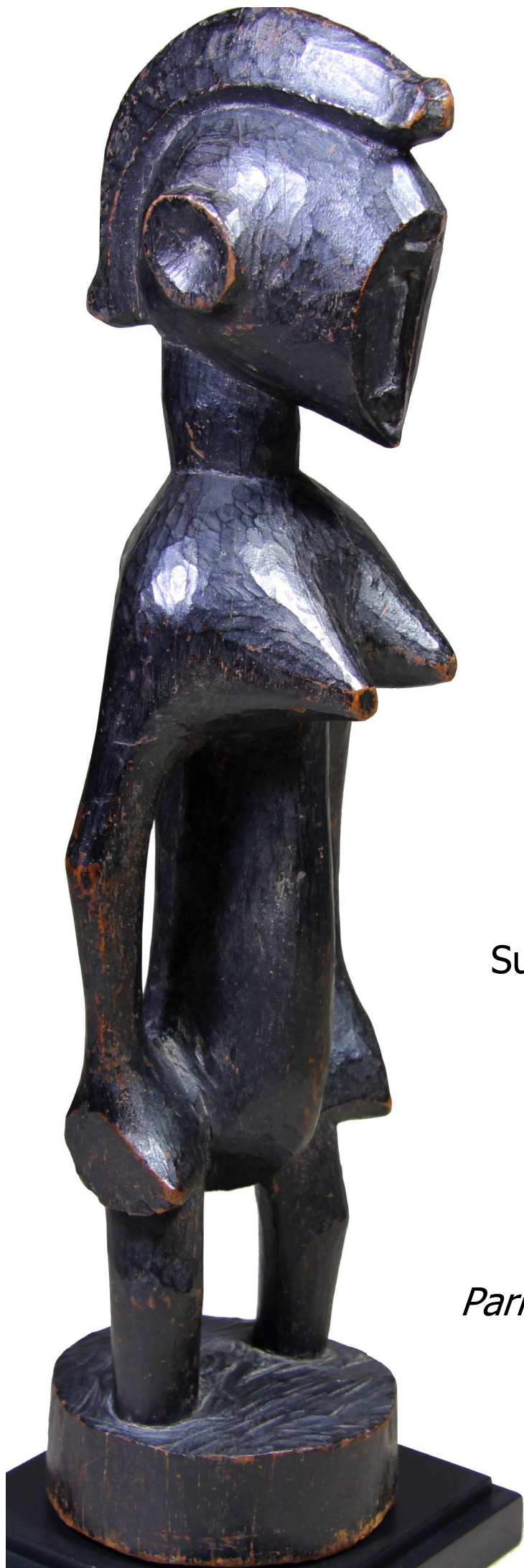
Yves Créhalet collection, Paris.

*Published in « Treize charmes d'Afrique »
by Yves Créhalet with the poems by
Pierre Amrouche and photos by Luc
Berthier, Editions Présence Africaine,
Paris, 2012.*









Senufo

128Y

Superb female statuette from the
Sikasso Region.

"Atelier of the cut faces"

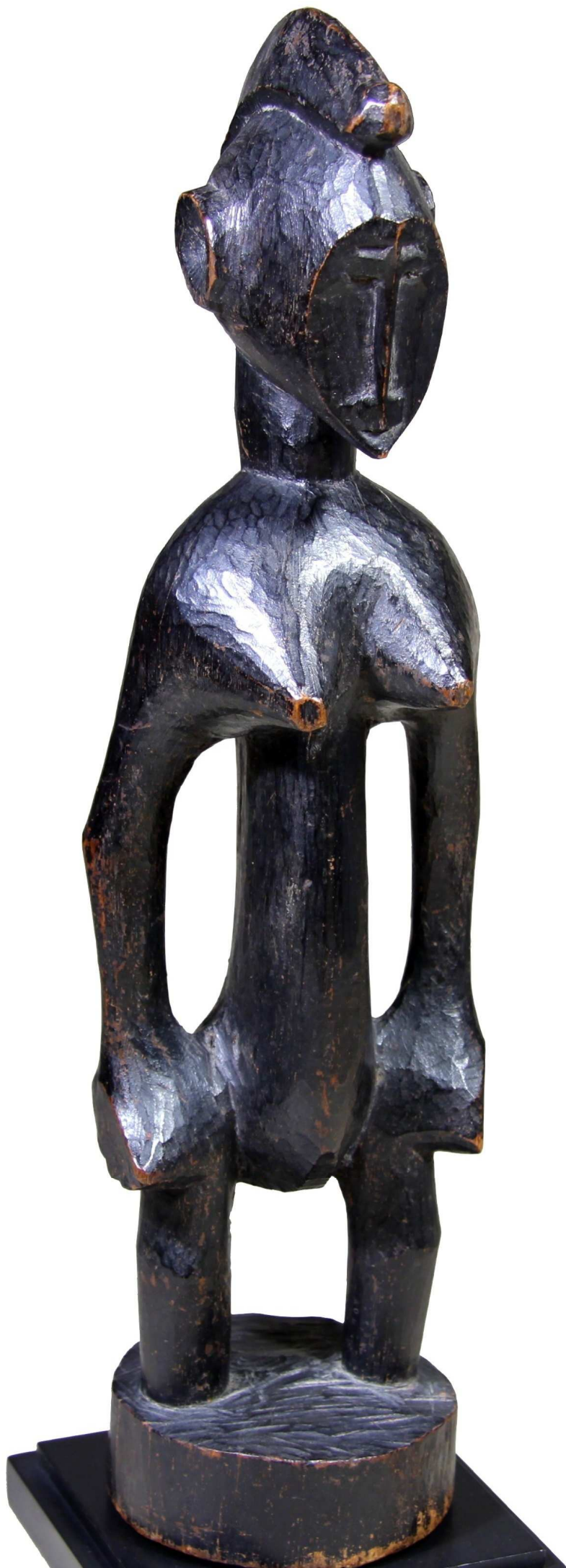
(Beppe Berna).

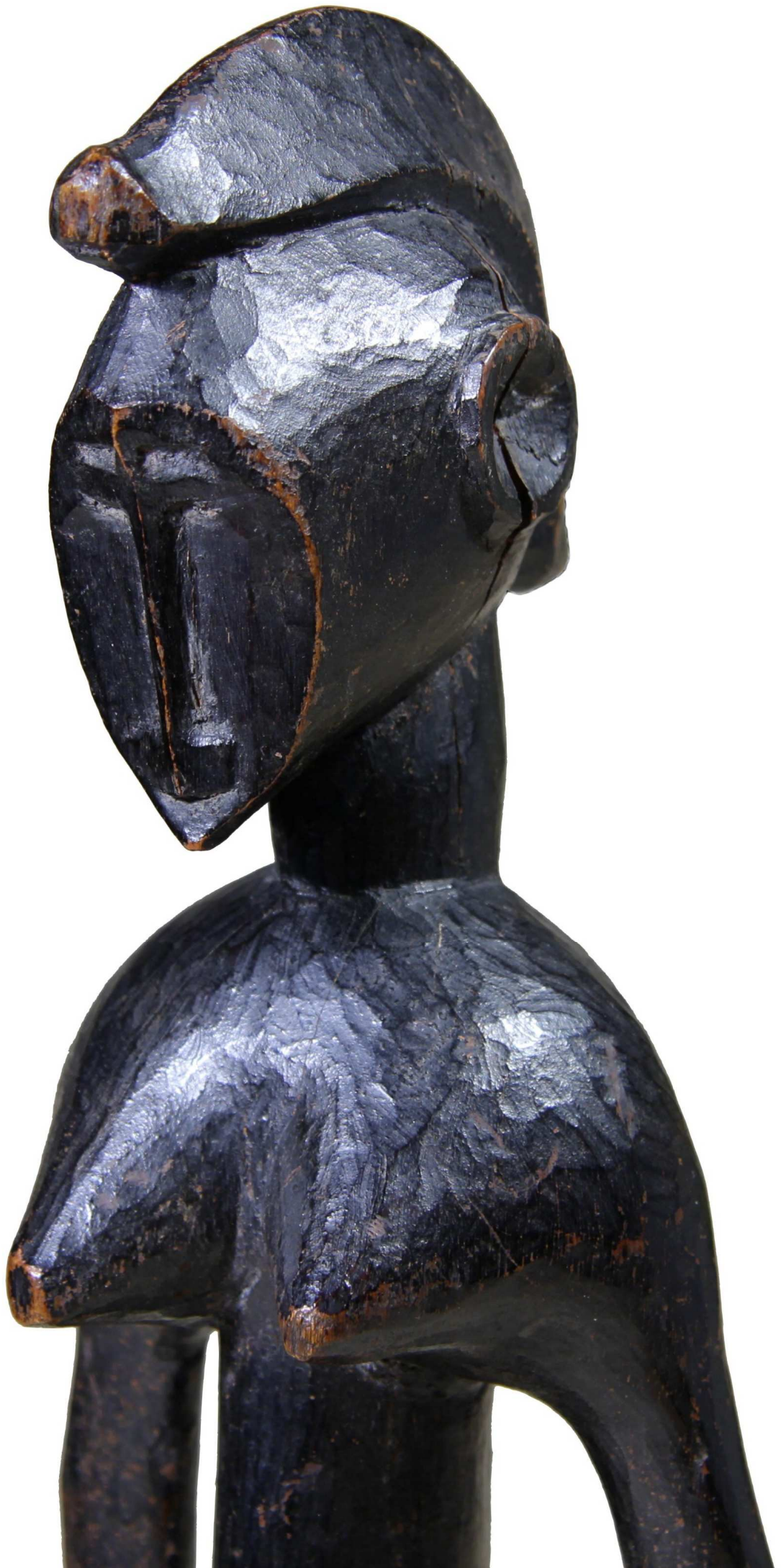
Late 19th / early 20th century.

H. cm. 37,5

*Parisian collection by legacy from a
collection of the 60's.*

Olivier Castellano, Paris.





Yoruba

132Y

Extraordinary **oshe shango**,
emblem of dance.

H. cm. 47

*Old American collection.
Private French collection.
Olivier Castellano, Paris.*









Mumuye

120Y

Superb figure, probably feminine,
from the *Master "Nyavo-Father"*
of Pantisawa (Beppe Berna).

H. cm. 71,8

American private collections.





Kambari, Dogon

127Y

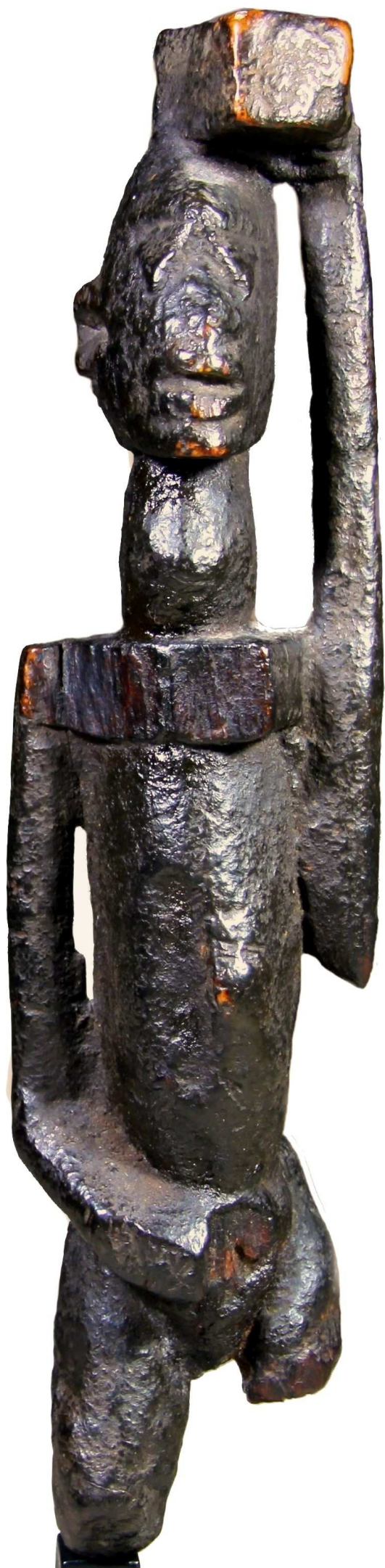
Exceptional and very rare example of the **kambari** style.

Less than a dozen known specimens.

19th century.

H. cm. 26,3

*Old private collection, Paris.
Italian private collections.*



Baule

122B

Extremely rare weaving spool
with animal head (beech
marten?).

H. cm. 14,8

*Former Procureur Général
Liotard collection, France
(1960's).*

Galerie Valluet - Ferrandin, Paris.







Mbala

134Y

Pindi, extraordinary female figure.

Late 19th / early 20th century.

H. cm. 29,4

*Old German collection.
Yann Ferrandin, Paris.*







Baulé

131Y

Very rare female figure **blolo bla**, the bride of the afterlife.
Baulé people integrated into
the lagoon complex.

Late 19th / early 20th century.

H. cm. 31,5

*Old French colonial collection
(Lyon) established between the
1930's and 1950's.
Olivier Castellano, Paris.*







Dayak, Pasir

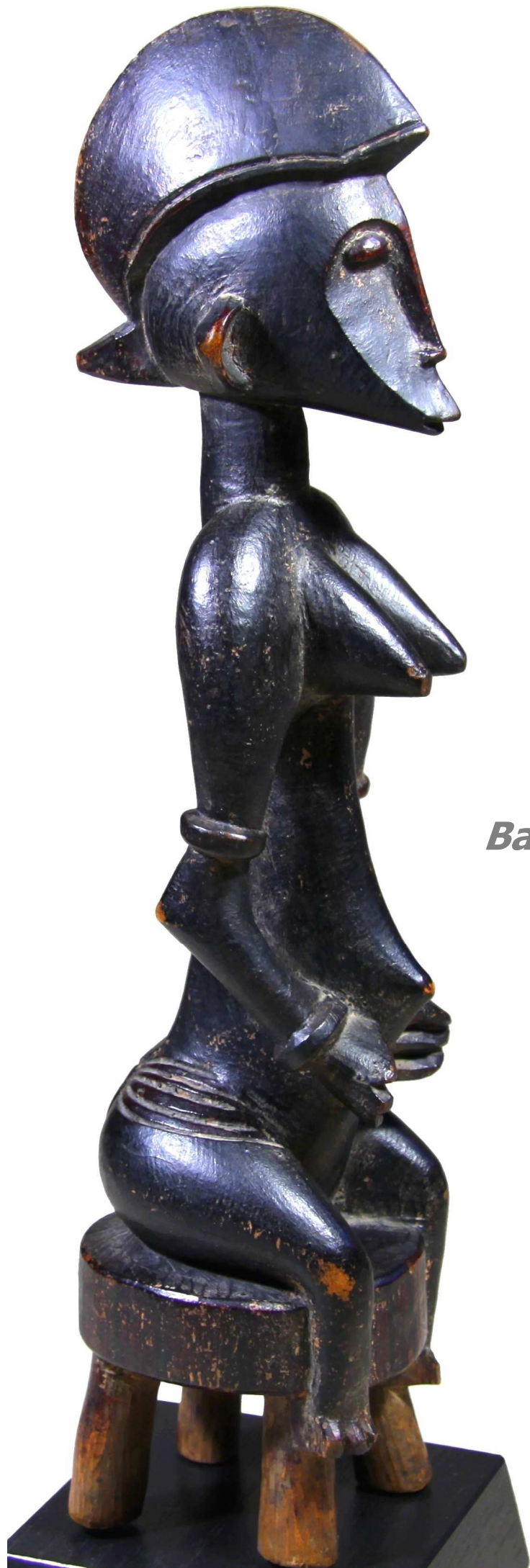
128P

Very rare **Tolor**, container for
blowgun darts.

H. cm. 40,7

*Angelo Attilio Attili, Parma.
Denise and Beppe Berna, Bologna,
from the late 1980's.*





Senufo

129Y

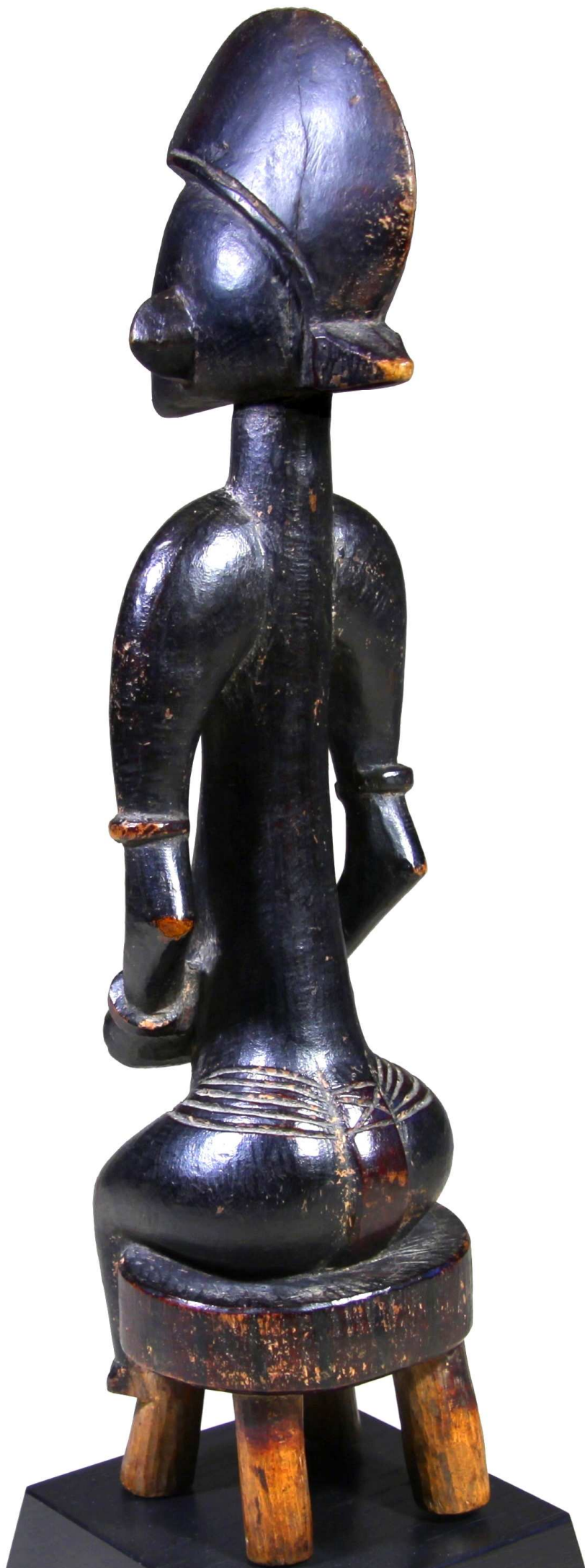
Superb female statuette of the
*Master of the woman in the
Barbier-Mueller* (Beppe Berna).

Late 19th / early 20th century.

H. cm. 34,5

*Old American collection.
Olivier Castellano, Paris.*







Dogon, Bombou-Toro Yayi, canton de Sangha

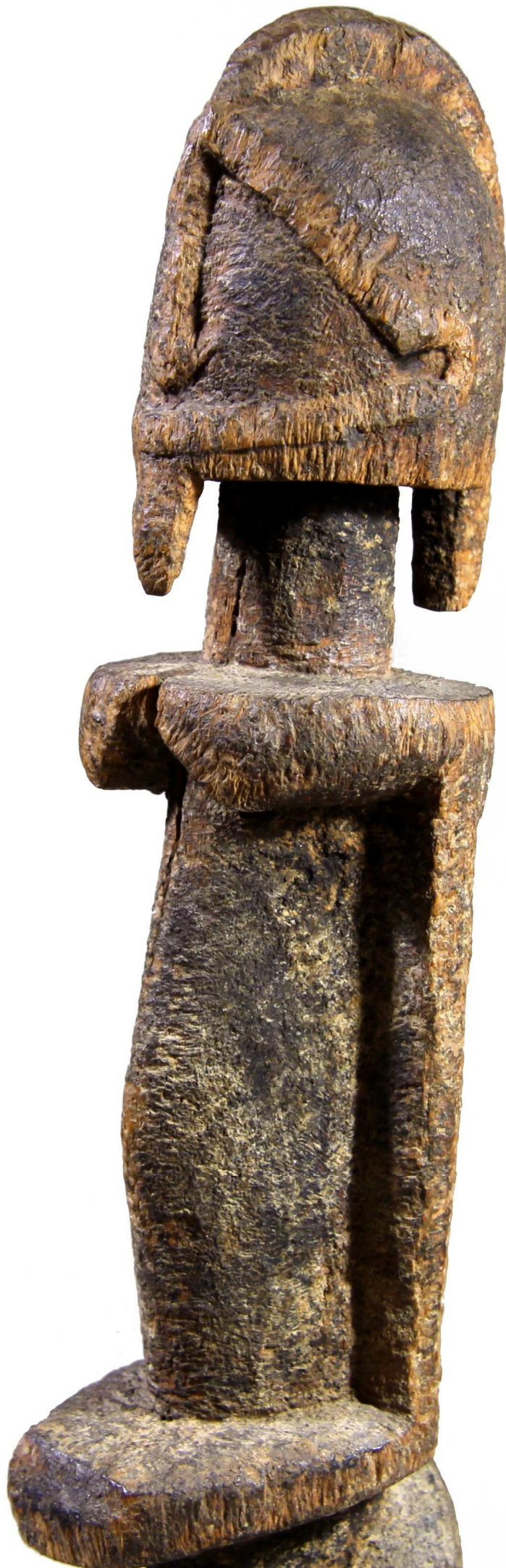
136Y

Exceptional sculpture
depicting the **nommo**.

18th century or before.

H. cm. 38

*Reginald Groux, Paris, 2003.
Private French collection.
Olivier Castellano, Paris.
Private collection, Paris.*





Senufo

135Y

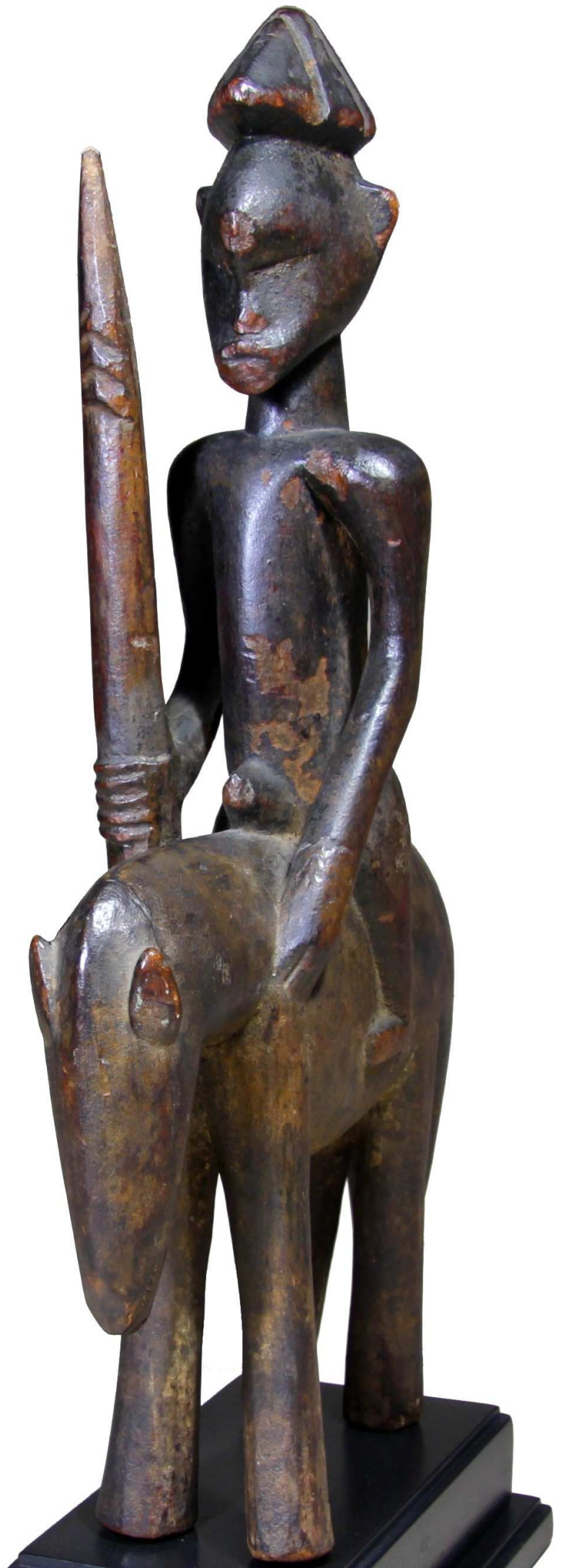
Very old rider sculpture evoking **syonfolo**.
Used for divination practices.

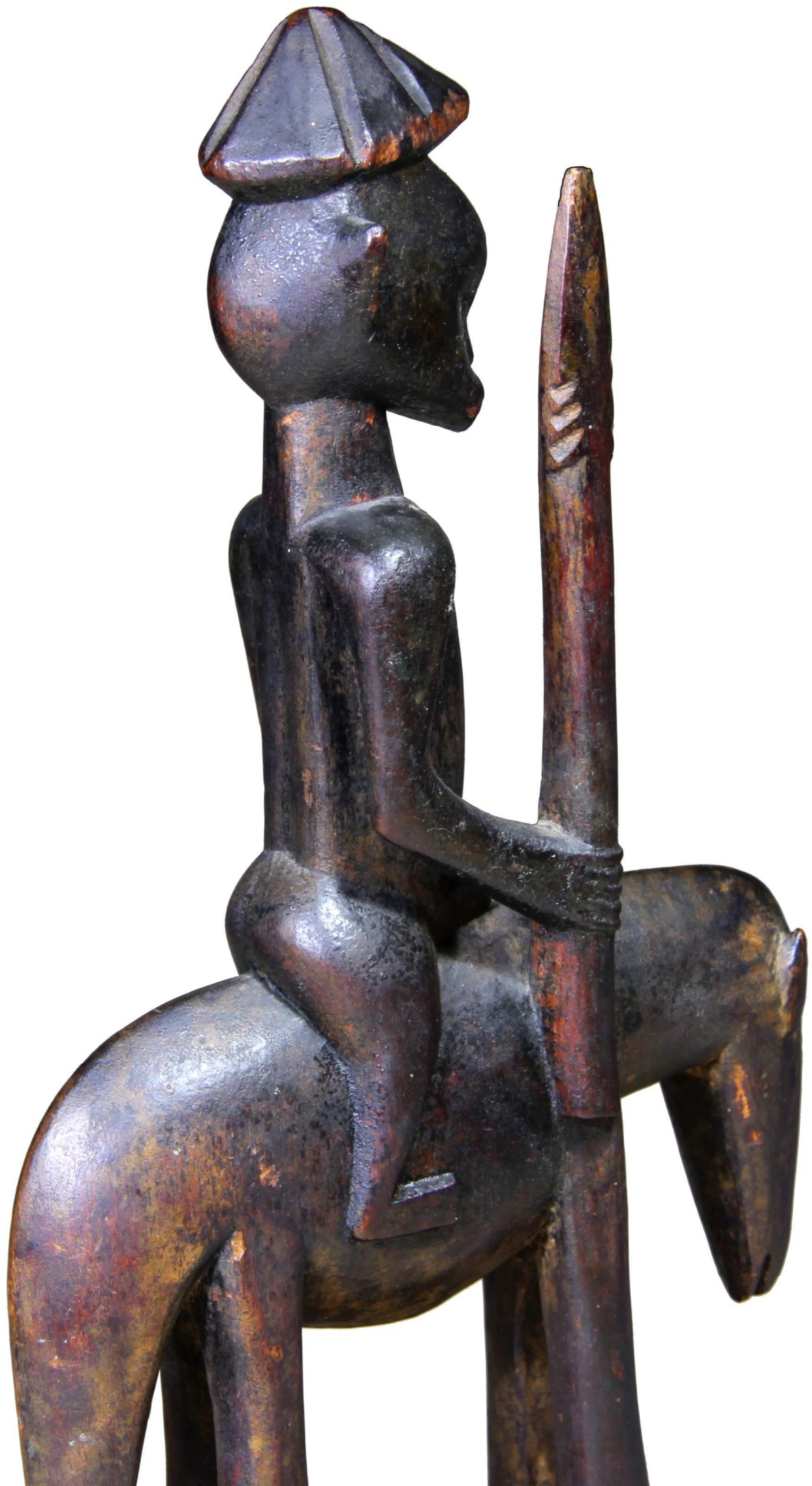
Late 19th century.

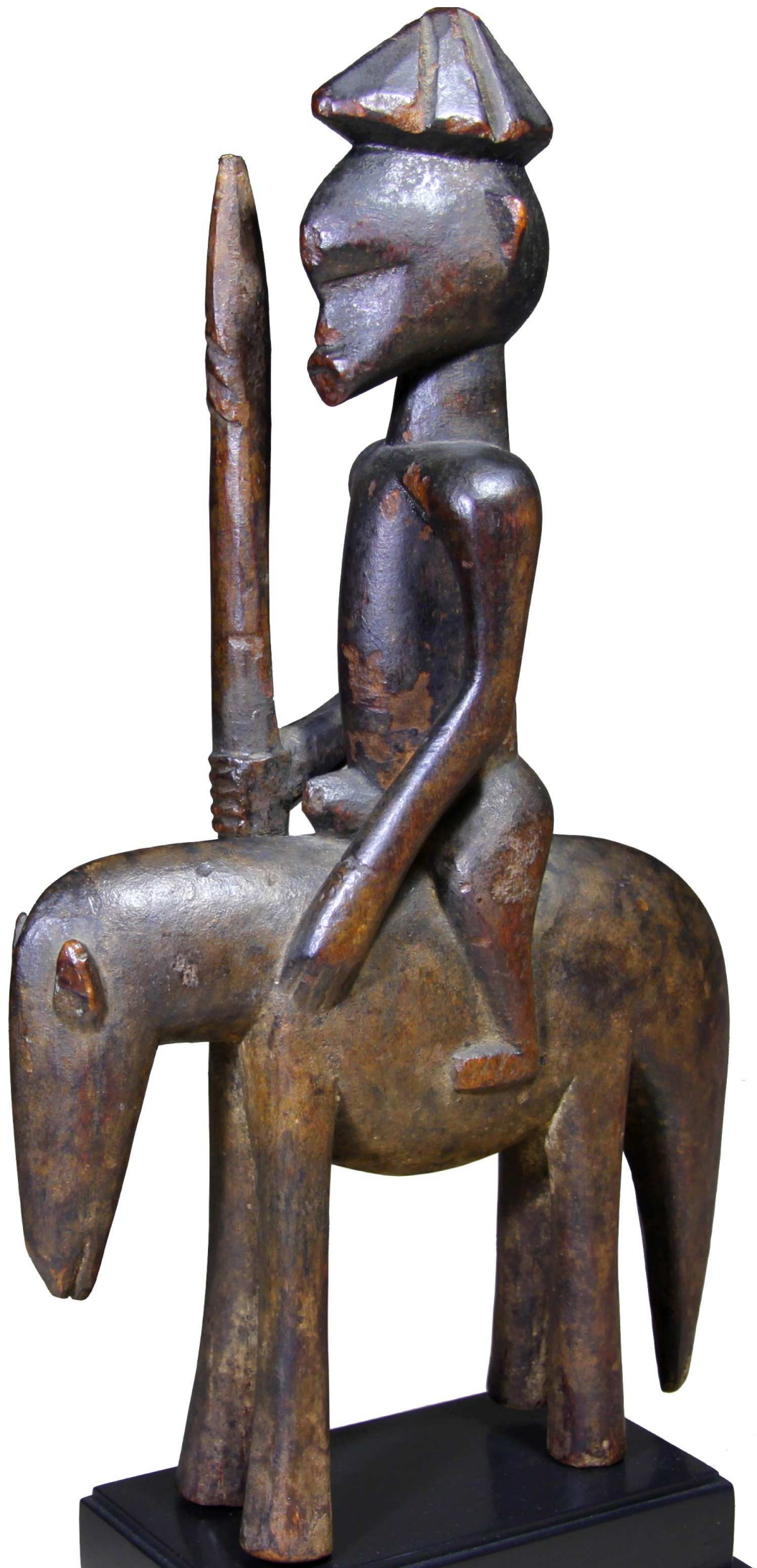
H. cm. 42

*Jean Descamps, circa 1910,
diplomat.*

*Christine Lasserre Collection.
Didier Claes, Brussels.
Alain de Monbrison, Paris.*







... for more information: berna@debberna.it



Denise e Beppe Berna

arte tribale - arte archeologica
tribal art - ancient art

Via Borgo S. Pietro 43 - 40126 Bologna, Italy

Phone +39 051 253175

su appuntamento - by appointment only